

ANCHORAGE MUSEUM OF HISTORY AND ART
Anchorage, Alaska



Design Architect: **David Chipperfield, London, UK**
 Architect of Record: **Kumin Associates, Inc., Anchorage, AK**
 General Contractor: **Alcan General Incorporated, Anchorage, AK**

AWS has been contracted to engineer, manufacture, and fabricate the 52,694 square foot building envelope for this LEED certified museum expansion project. Located in downtown Anchorage, the addition will be the first Smithsonian Institute facility outside of Washington D.C. and will feature Alaskan native artifacts. Some interesting features of the building envelope are...

- ◊ 20 foot long silk screen insulated glass units in a unitized curtain wall
- ◊ 20 foot long laminated glass units
- ◊ Mirrored frit on the interior of the outboard lite of glass that:
 - ◊ creates a reflective appearance from the exterior
 - ◊ creates a non-reflective clear anodized appearance from the interior
 - ◊ results in reflection, transparency and shading.
- ◊ Heating system integrated into the curtain wall frame and placed in between the two glass units
- ◊ Curtain wall features Integrated automatic roller blinds that adjust to the sun



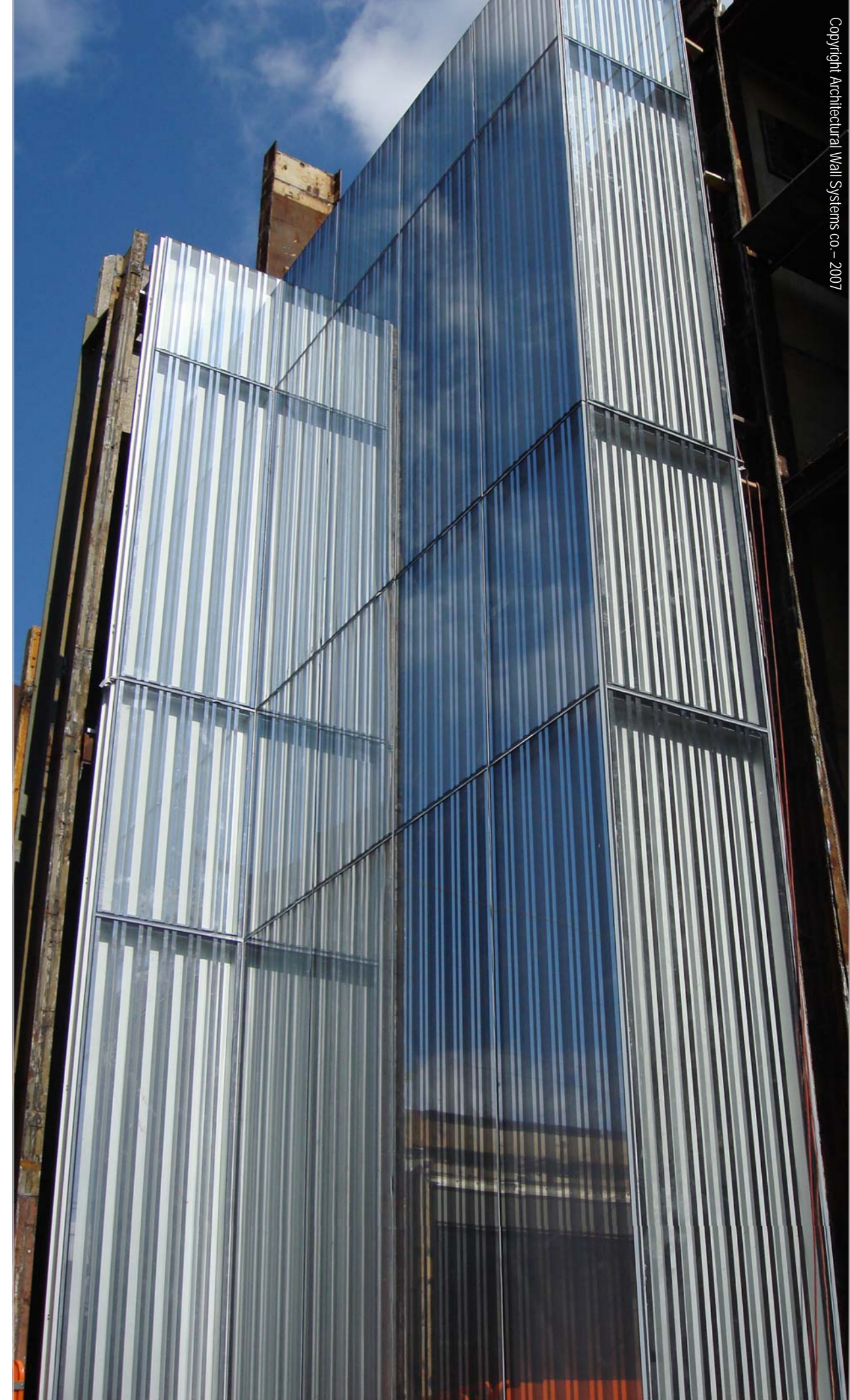
20 foot curtain wall unit



Integrated Heating System



Reflection and transparency



Performance Mock Up testing — Construction Research Laboratory, Inc., Miami, FL

Copyright Architectural Wall Systems co. - 2007



Since 1991, AWS has been servicing the design and construction community with budgeting, engineering, manufacturing and erection services for building envelopes of all sizes and complexity.

[Click information](#)

[Click Unsubscribe](#)