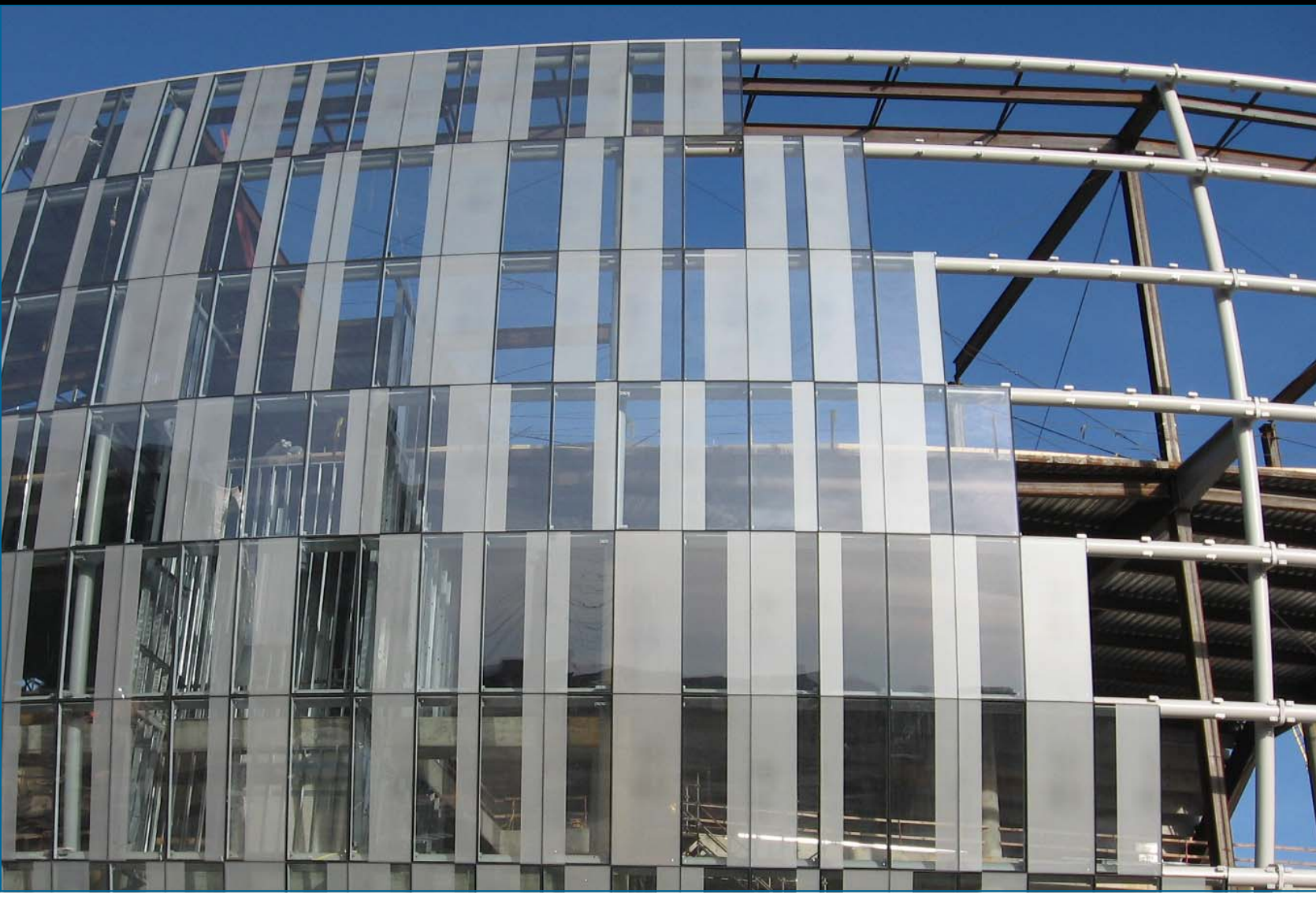


KANSAS CITY SPRINT ARENA



Architect: DADT, Kansas City, MO GC: M.A. Mortenson, Minneapolis, MN

- * 2,204 unitized glass panels *engineered, manufactured, tested and installed* by AWS
- * 500 different glass patterns, custom frit patterns and *colored amber PVB* inner layers
- * *Approximately 5' wide x 12' tall curtain wall units* weighing approximately 700 lbs
- * Tapering glass lites to fit the *geometric cylindrical design*
- * Over 130,000 SF of glass
- * Over *126 different sizes* of unitized curtain wall panels
- * Successfully tested at Construction Research Laboratories by AWS for *structural and performance integrity*
- * installation duration approximately six months

[To learn more about the KC Sprint Arena click here](#)

Since 1991, AWS has been servicing the design and construction community with budgeting, engineering, manufacturing and erection services for building envelopes of all sizes and complexity.

A full staff of professional engineers, project managers, and field professionals allows AWS to provide system solutions to keep your projects within budget and on schedule.

Winner of six AIA Craft Awards, AWS gives you the quality, craftsmanship and customer service you deserve. Delivering cutting edge options for technology, performance and sustainability so you can have aesthetic freedom to design with and budget options to build from.

**ARCHITECTURAL
WALL
SYSTEMS**

6601 Westown Pkwy, Ste. 100
West Des Moines, IA 50266
515.255.1556 f: 515.255.1510

[Click to
Unsubscribe](#)

Call us today or visit our website
515.255.1556 — www.archwall.com